

The background of the poster is a photograph of the UCLA Royce Hall, a large, ornate building with two prominent towers and multiple arched windows. The image is overlaid with a blue-to-yellow gradient. The text 'UCLA' is in a white, sans-serif font, centered above the word 'Summer'. 'Summer' is written in a large, white, cursive script. Below it, 'SESSIONS | 2017' is in a smaller, white, sans-serif font. A large, white, abstract brushstroke is on the left side of the image.

UCLA

Summer

SESSIONS | 2017

BECOME A SUMMER BRUIN!

JOIN US AT UCLA FOR AN ENRICHING AND UNFORGETTABLE SUMMER.

During the summer months, UCLA opens its doors to students from all over the world! With over 1,200 academic courses to choose from, Summer Sessions offers highly motivated undergraduates, high school students and working professionals a chance to advance their learning by experiencing the academic rigor and excellence UCLA is known for.

UCLA's outstanding faculty and instructors teach Summer Sessions courses and programs in a variety of lengths and formats, including online. Students attending Summer Sessions also enjoy an extensive array of campus resources, including libraries and athletic facilities, as well as cultural events that are among the world's finest.

For updates and additional details as they become available, visit our website at summer.ucla.edu.

TABLE OF CONTENTS

05

Academic and
Online Courses

08

College/Professional
Summer Institutes

09

International
Student Requirements

11

Preview of Summer
2017 Courses

13

About UCLA

15

Los Angeles and Beyond

17

Contact Information



ACADEMIC COURSES

FEB 15 Registration opens for all Visiting Students

SESSION A

MAY 1 I-20 request deadline for
International Students

JUN 26 Session A begins

AUG 4 Six-week session ends

AUG 18 Eight-week session ends

SEPT 1 10-week session ends

SESSION C

JUN 1 I-20 request deadline for
International Students

AUG 7 Session C (six-weeks) begins

SEPT 15 Session C ends

SUMMER INSTITUTES

FEB 15 Registration opens

COURSES

ACADEMIC COURSES

Choose from more than 1,200 courses in the arts, engineering, film and tv, management, political science and more!

Courses are offered in six, eight or 10-week intensive sessions.

All UCLA Summer Sessions courses are university-level courses. Students may order an official UCLA transcript upon completion.

ONLINE COURSES

Taught by UCLA faculty, Summer Sessions online courses give you the opportunity to earn UC credit anytime, anywhere.

Using the latest technology for top-quality online learning, a wide variety of online summer courses are offered allowing you flexibility with your study schedule while experiencing the excellence and quality of a UCLA education.

For more details, visit summer.ucla.edu/online.

ENROLLMENT

Register directly online at summer.ucla.edu or use a designated overseas Registration Center. Registration Center staff can assist you with selecting classes and applying for the F-1 Visa.

A list of approved Registration Centers is available at summer.ucla.edu/internationalstudent.

COURSE PREREQUISITES

Some UCLA Summer Sessions courses have prerequisites that are indicated in the course description. Please make sure that you have experience comparable to the listed course prerequisites; there is no need to submit school transcripts.

If you are uncertain about the level of difficulty of a course, full descriptions are available at registrar.ucla.edu/academics/coursedescriptions.

GRADE REPORTS & TRANSCRIPTS

All grades earned in Summer Sessions become part of your official UCLA transcript. The transcript shows all work completed at UCLA.

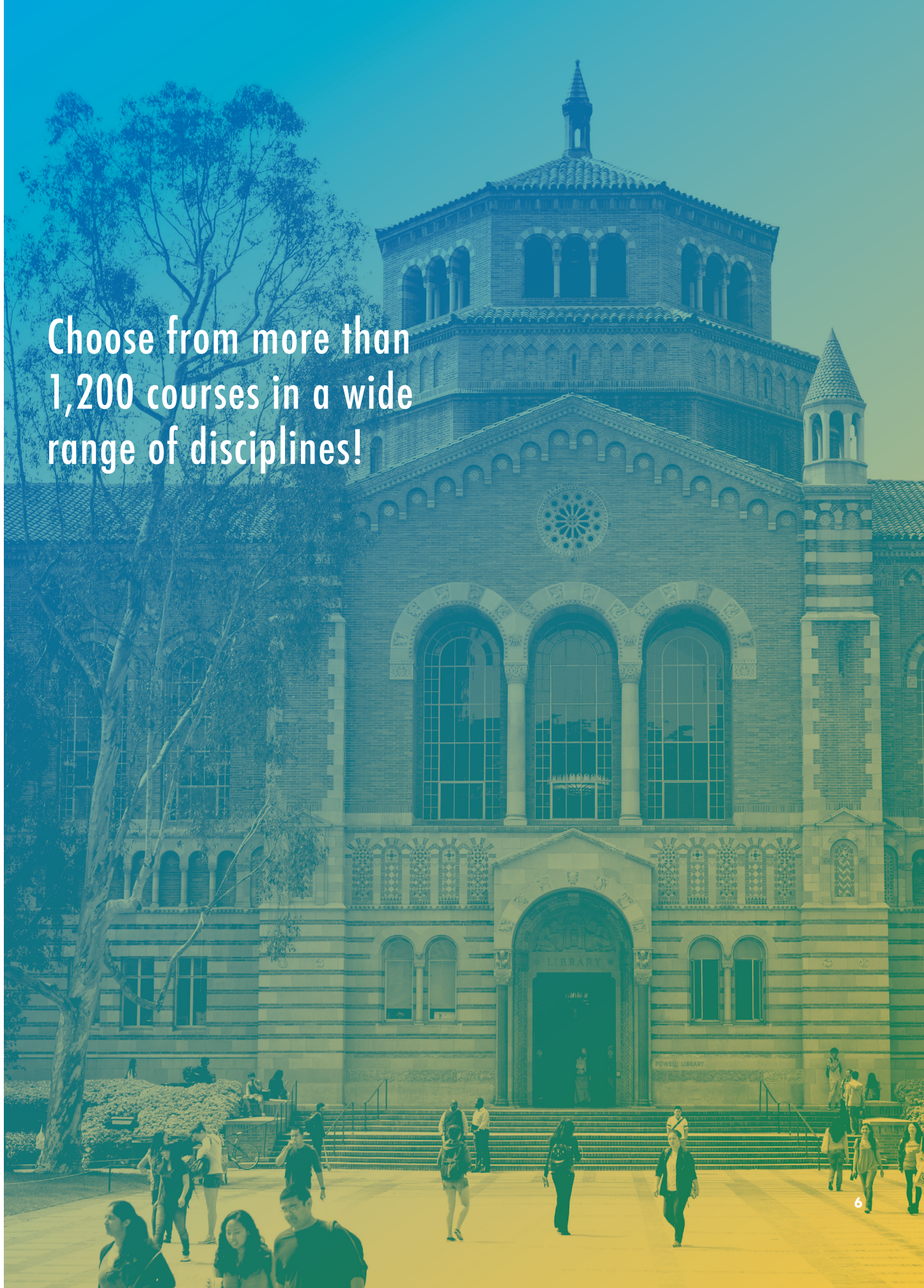
A one-time document fee for transcript orders may be assessed to those who meet the assessment criteria.

COURSE SCHEDULE & DESCRIPTION

Beginning in January, a complete schedule of summer courses and description is available online at sa.ucla.edu/ro/public/soc.

CREDIT TRANSFER

Please consult with your home institution regarding transfer of UCLA course work.



Choose from more than
1,200 courses in a wide
range of disciplines!



UNITS OF CREDIT

Most UCLA Summer courses offer four units of credit, but some courses vary in the number of units. International students are required to enroll in a minimum of eight units per session, which means two or three courses.

ADMISSION TO UCLA

Registration in Summer Sessions does not constitute admission to UCLA.

If you would like to attend UCLA during the academic year, you should formally apply for admission through UCLA Undergraduate Admission admission.ucla.edu or Graduate Division grad.ucla.edu.

COURSE NUMBERING

Each UCLA course listing includes a number that indicates whether a course is undergraduate, graduate or professional level.

Use the chart below to determine the level of your course.

COURSE NUMBERING CHART			
Undergraduate		Graduate	
1 – 99	100 – 199	200 – 299	300 – 499
Lower Division Equivalent to first and second years of college.	Upper Division Equivalent to third and fourth years of college.	Graduate Level Courses	Professional Courses

POPULAR COURSES

BUSINESS ECONOMICS

This tightly focused curriculum prepares you for graduate education in business, economics and law.

DIGITAL CINEMATOGRAPHY

This course covers how tools and techniques affect the visual storytelling process.

COLLEGE/PROFESSIONAL SUMMER INSTITUTES

UCLA Summer Institutes offer the breadth and depth of UCLA’s academic rigor in an intensive, holistic format that allows you to share a unique, hands-on learning experience. To participate in a College/Professional Summer Institute, visit summer.ucla.edu beginning February 15, 2017.

Eligibility requirements, fees and durations vary by program. Dates and availability are subject to change.

For program details and full descriptions, visit summer.ucla.edu/institutes.

MANAGING ENTERPRISE IN MEDIA, ENTERTAINMENT AND SPORTS*

Gain an overview of the legal, management, marketing and financial aspects of managing a global entertainment and media enterprise.

All students enroll in “The Global Business of Media, Entertainment & Sports: Leading Change in Challenging Times” and choose one of three tracks for their concentration:

1. Film & Television Marketing and Management
2. Integrated Marketing
3. Sports Marketing and Management

FILM & TELEVISION

Taught by top scholars and industry professionals, this institute is a rare opportunity to study the role of the Hollywood producer or filmmaker.

The program also includes lectures by industry executives and opportunities to intern with a major entertainment company. International students can choose from the following tracks:

1. Animation
2. Film Production

TECHNOLOGY LEADERSHIP

This intensive program explores technology leadership from all sides: from product innovation and development, to communication, data management, and data analytics. This 6-week program carries 8 units of UC credit. Participants gain a better sense of what it is like to have a technology role through company visits, speaker series and panels. Students must select one of two tracks based on their background or interest:

1. Leadership Through Communication
2. Data Management and Analytics, Big & Small Data



INTERNATIONAL STUDENT REQUIREMENTS

ENGLISH PROFICIENCY REQUIREMENT

If you are from a country in which the official language is not English, you are required to submit proof of English language proficiency.

All applicants must satisfy the English Proficiency Requirement regardless of citizenship, unless one of the following items applies:

- You are from a country exempt from the English Proficiency requirement.
- You enroll exclusively in Communication Studies 1A and/or 1B.
- You enroll exclusively in English as a Second Language (ESL) courses.

UCLA accepts the following proof of English proficiency:

TOEFL - MINIMUM SCORE OF 79 (IBT)
IELTS - MINIMUM SCORE OF 6.5
ITEP - MINIMUM SCORE OF 5

More information is available at summer.ucla.edu/academiccourses/internationalstudent/english.

FULL-TIME STUDENT STATUS

All international (non-immigrant) students coming to the United States with the primary intention of study are required to obtain the appropriate student (F-1) Visa status.

International students with an I-20 (F-1) certificate of eligibility document must maintain full-time enrollment (at least 8 units per session) throughout the entire summer session period.



VISA & IMMIGRATION

In order to apply for an F-1 Visa at a U.S.Embassy or Consulate in your country, you first need to complete the I-20 (F-1) request.

After you enroll in a minimum of 8 units, you will receive instructions by email on how to request the I-20 form. International students are required to have valid F-1 Visas in their passports to enter the United States. Canadian citizens do not need visas, but do need the I-20 form for entry in student status. International students are also required to have a valid passport for at least six months from the date of arrival.

More information is available at summer.ucla.edu/academiccourses/internationalstudent/visa.

HEALTH INSURANCE

Health insurance coverage is required to protect students from unexpected expenses.

Summer Sessions international students are automatically enrolled in a health insurance plan that meets all UCLA and immigration requirements.

More information is available at summer.ucla.edu/academiccourses/internationalstudent/insurance.

TUITION & FEES

Fees vary depending on the number of courses you choose to take. Additional fees may apply for campus housing and other factors.

For a complete description of all course and program fees and their applications, visit summer.ucla.edu/academiccourses/internationalstudent/feesandpayment.

All fees are subject to change without prior notice.

Below are the estimated tuition and fees for a visiting international student taking two courses (four units each) during a six-week session.

Course Fees

(two 4-unit courses at \$342 per unit)*:	\$2,712
Registration Fee:	\$790
Health Insurance Plan:	\$385
iStart (online orientation):	\$59
IEI Fee:	\$61
Document Fee:	\$50

Total: **\$4,057**

**Fees subject to change.*

PREVIEW OF SUMMER 2017 COURSES

OVER 1,200 ACADEMIC COURSES ARE OFFERED IN A NUMBER OF SUBJECTS.

View the 2017 Schedule of Classes at:
sa.ucla.edu/ro/public/soc

African American Studies

American Indian Studies

American Sign Language

Ancient Near East

Anthropology

Applied Linguistics

Arabic

Architecture & Urban Design

Art

Art History

Asian American Studies

Astronomy

Atmospheric & Oceanic Sciences

Bioengineering

Biological Chemistry

Chemistry & Biochemistry

Chicana & Chicano Studies

Chinese

Civil & Environmental Engineering

Classics

Communication Studies

Community Health Sciences

Comparative Literature

Computer Science

Dance

Design | Media Arts

Disability Studies

Earth, Planetary & Space Sciences

Ecology & Evolutionary Biology

Economics

Education

Electrical Engineering

Engineering

English

English as a Second Language

English Composition

Environment

Epidemiology

Ethnomusicology

Film & Television

French

Gender Studies

Geography

German

Global Studies

Health Policy & Management

History

Information Studies

International & Area Studies

International Development Studies

Italian

Labor & Workplace Studies

Lesbian, Gay, Bisexual & Transgender Studies

Life Sciences

Linguistics

Management

Material Science & Engineering

Mathematics

Mechanical & Aerospace Engineering

Microbiology, Immunology & Molecular Genetics

Molecular, Cell & Developmental Biology

Music

Music History

Music Industry

Neuroscience

Nursing

Philosophy

Physics

Physiological Science

Political Science

Portuguese

Program in Computing

Psychology

Public Health

Public Policy

Religion, Study of

Society & Genetics

Sociology

South Asian

Statistics

Theater

Urban Planning

World Arts & Culture/
Dance



ABOUT UCLA

BRUINCARD bruincard.ucla.edu

The BruinCard is your official university identification card. It allows you to borrow library books, work out in the campus gym and receive discounts at a selection of local businesses. If you are living on campus, you will use it for meals and dorm access, among other conveniences. It can also be used as a debit card if you set up an account and deposit money. You can apply for your BruinCard after completing registration and enrollment.

UNIVERSITY HOUSING housing.ucla.edu/summer-housing

Most students find living on campus to be a convenient and enjoyable option during Summer Sessions. UCLA offers furnished residence halls and residential suites within a short walking distance of classrooms, libraries and recreational facilities. Housing is available for periods of six, eight, 10 and 12 weeks. If you prefer the independence of living off-campus, UCLA also offers University Apartments near campus.



MEAL PLANS dining.ucla.edu

Students who live in university housing can choose among several meal plans. Our award-winning dining halls are known for high quality food and service. Vegetarian and vegan options are also available in the dining halls and other campus eateries.

RECREATION recreation.ucla.edu

The Wooden Center is the UCLA campus gym. It offers a range of sports facilities, including basketball and racquetball courts, a weight room, rock climbing wall, fitness equipment and classes in yoga, dance and martial arts. Sunset Recreation Center, located on the Hill, offers picnic areas, volleyball courts and swimming pools. Throughout campus, you will find swimming pools, tennis courts, soccer fields and running tracks.

COMMUNITY HOUSING OFFICE (CHO) housing.ucla.edu/community-housing

For students who wish to live in the Westwood area, but do not wish to live in University Apartments or residence halls, please visit the CHO website for listings of temporary apartment availabilities and roommate requests.

OUR CAMPUS IS NOT A BACKDROP. IT'S THE FOREGROUND OF THE FUTURE.

LIBRARIES library.ucla.edu

With a collection of more than 8 million volumes, UCLA Library is ranked among the top 10 research libraries in the country. The two main collections are housed in the College Library, geared toward the undergraduate curriculum, and the Charles E. Young Research Library, which specializes in graduate research. Additionally, there are 13 special subject libraries with impressive collections in the arts, engineering, science, film and tv, law and medicine.

EVENTS & PERFORMANCES happenings.ucla.edu

UCLA invites a wide variety of performers and lecturers to campus every year. With two museums, the Fowler and the Hammer, as well as the Film and Television Archive (the world's largest university-based collection of motion pictures) and the Center for the Art of Performance at UCLA (CAP UCLA), summer is full with musical performances, special exhibitions and screenings.

CENTRAL TICKET OFFICE tickets.ucla.edu

Tickets for all UCLA cultural events are available at the Central Ticket Office (CTO). CTO also offers discounted student tickets to campus athletic events, local movie theaters, theme parks and public transit options that can take you all over the city.

CAMPUS SAFETY & SECURITY ucpd.ucla.edu

UCLA works hard to ensure the well-being of all its students through a professional police department. Services include an evening van service, walking escorts, bike lockers and emergency telephones placed throughout campus.

TRANSPORTATION & PARKING transportation.ucla.edu

Parking is assigned on a space-available basis for an additional charge. Payment is due upon receipt of the parking pass; parking contracts are issued equal to the length of your enrollment in Summer Sessions. Public transportation is also available near and around campus for commuters or for the purpose of visiting local attractions.

CODE OF CONDUCT deanofstudents.ucla.edu

As members of the UCLA community, summer students have the same rights and privileges as current admitted UCLA students and are held to the same standards of conduct. The UCLA Student Code of Conduct mandates a safe, supportive and inclusive campus community that engages students to foster their academic success, personal growth and responsible citizenship.

Behavior governed by the UCLA Student Code of Conduct includes academic honesty, treatment of others, health and safety, use of resources and use of alcohol and controlled substances.

UCLA's reputation for academic excellence and institutional integrity is of paramount importance, and UCLA does all within its power to maintain its standards. Visit the Dean of Students website for more information.



LOS ANGELES AND BEYOND

WESTWOOD VILLAGE

Located just south of campus, Westwood Village is designed around student tastes and needs. It has three major grocery stores and dozens of restaurants and cafés. Among its movie theaters is the Mann Village Theatre, which frequently hosts movie premieres.

The Geffen Playhouse puts on plays that are as inventive as they are star-studded. UCLA's own Hammer Museum showcases art and innovative programming. Not far from the village —just a few minutes by bus on the other side of the 405 Freeway —is the Getty Center.

BEVERLY HILLS

Just a couple of miles from UCLA, you'll find Beverly Hills and its famed Rodeo Drive. The city is home to tree-lined boulevards, carefully-kept mansions and high end retailers. If shopping or locating celebrity homes isn't your thing, you can take in a film screening at the Museum of Television and Radio.

SANTA MONICA

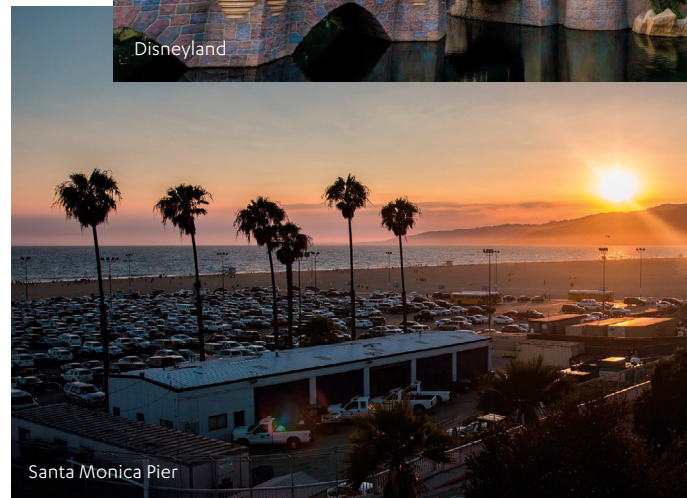
What was once a sleepy beach town is now a vibrant city between UCLA and the pacific coast. In addition to Santa Monica's beaches and the famed Santa Monica Pier, you can stroll Main Street, lined with shops and art galleries or the Third Street Promenade, an upscale complex with a broad collection of award-winning restaurants and more than 200 shops.



The Getty Center



Disneyland



Santa Monica Pier



Los Angeles Skyline

VENICE

Developer Abbot Kinney was inspired by New York's Coney Island when he designed Venice, California as a beach resort, complete with a casino, a saltwater pool and a pier full of restaurants and other amusements.

Huge canals were designed to imitate the Italian city, along with a beachfront boardwalk, which is home to Muscle Beach and some of the most colorful characters in town. Venice remains a great place for playing and people watching; the restaurants that line Abbot Kinney Boulevard are among the best in the area.

DOWNTOWN

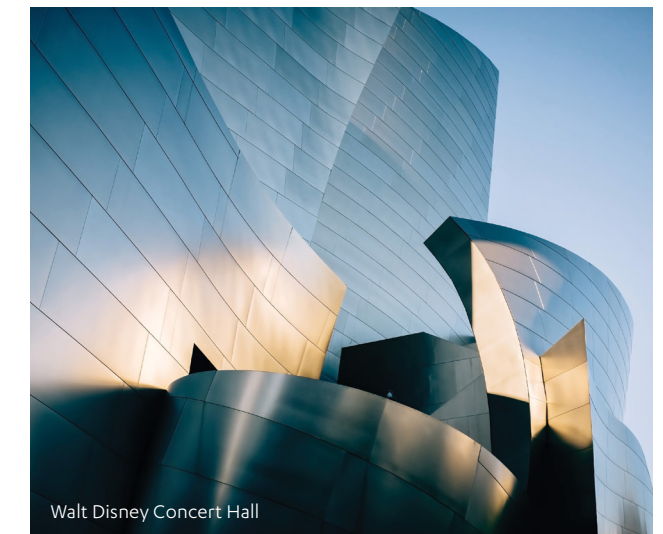
With scores of new clubs, restaurants and arts events, downtown LA is the hub of LA nightlife. The south end of downtown is anchored by LA Live, the Microsoft Theatre (home to the Grammys) and the Staples Center (home to the Lakers, Clippers and Kings).

On the north end, explore the Frank Gehry designed Disney Hall (home to the LA Phil), MOCA, the Dorothy Chandler Pavilion (home to the LA Opera), and the Ahmanson and Taper Theaters. Two new architectural standouts — the Cathedral of Our Lady of the Angels and the School of Visual and Performing Arts — face each other from either side of Highway 101.

AND BEYOND...

When you are at UCLA, the rest of California is at your fingertips. To the east is the desert, with Palm Springs and its retro vibe, as well as Joshua Tree National Park, home to some of California's best rock climbing and camping. To the south, the magic of Disneyland, the gorgeous beaches of Orange County and the wonderful climate of San Diego unfold one after another.

Drive north on Pacific Coast Highway for unforgettable ocean views, lunch in Santa Barbara and a tour of Hearst Castle. Farther north, you can explore the streets and bridges of San Francisco, the Napa Valley vineyards and breathtaking Yosemite National Park.



Walt Disney Concert Hall



Yosemite National Park

CONTACT INFORMATION

UCLA SUMMER SESSIONS

1331 Murphy Hall
summer.ucla.edu
(310) 825-4101




EMAIL

international@summer.ucla.edu

HOUSING OFFICE

housing.ucla.edu/summer-housing
(310) 206-7011

SOCIAL MEDIA

-  facebook.com/uclasummersessions
-  instagram.com/uclasummer
-  twitter.com/uclasummer

